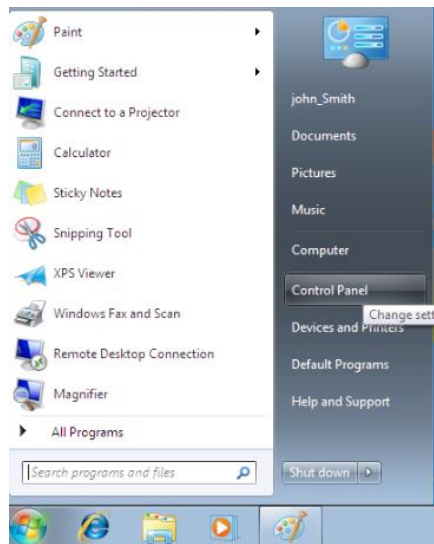


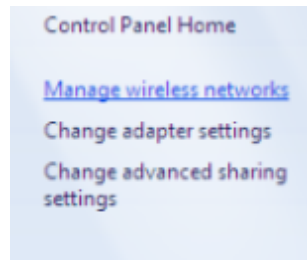
Click the start button and open Control Panel



Click on Network and Internet

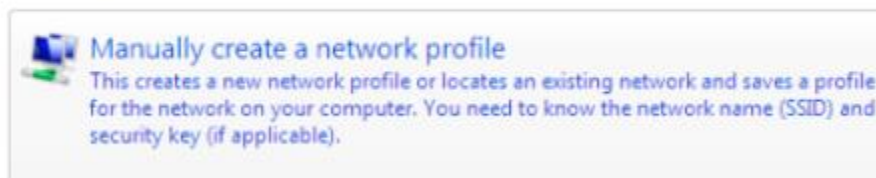


Click on Manage Wireless Networks (top left hand side of the window)

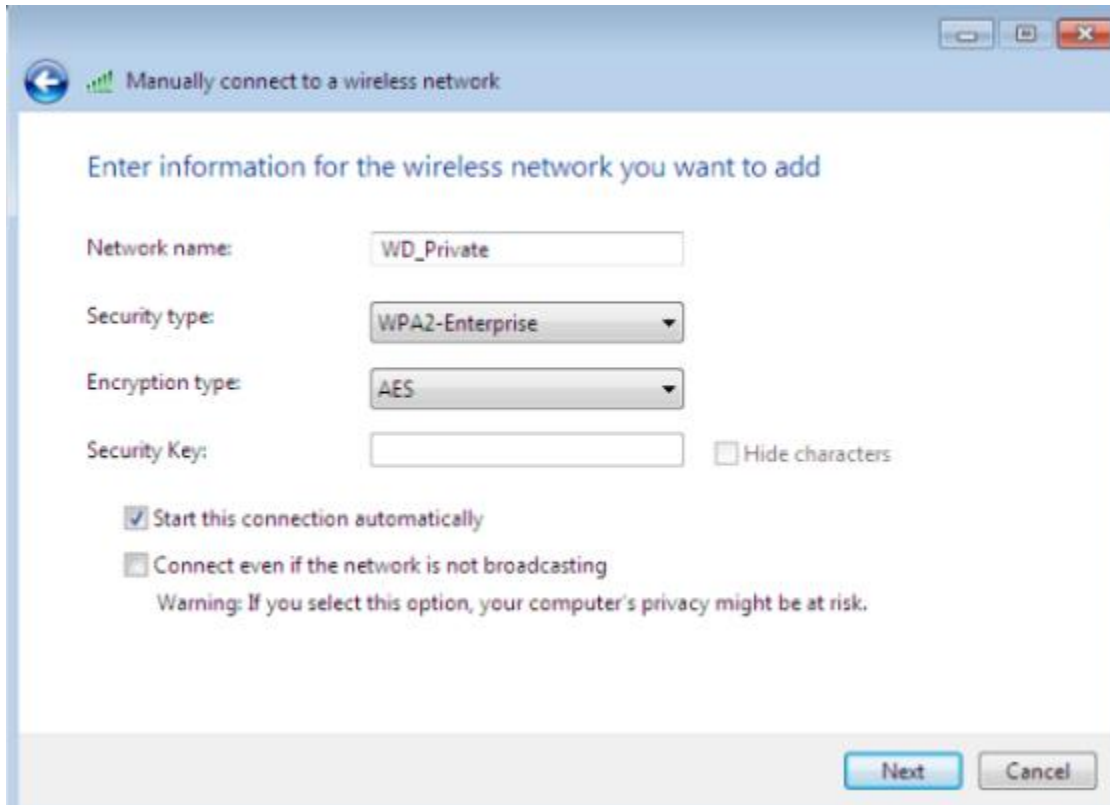


Click Manually create a network profile

How do you want to add a network?



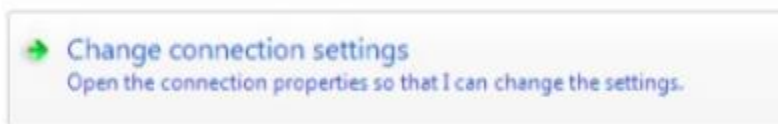
Type WD\_Private in the network name field box  
Choose WPA2-Enterprise for Security type  
Encryption type select AES  
Check the box to enable Start this connection automatically  
Click Next



The screenshot shows a Windows dialog box titled "Manually connect to a wireless network". The main heading is "Enter information for the wireless network you want to add". The form contains the following fields and options:

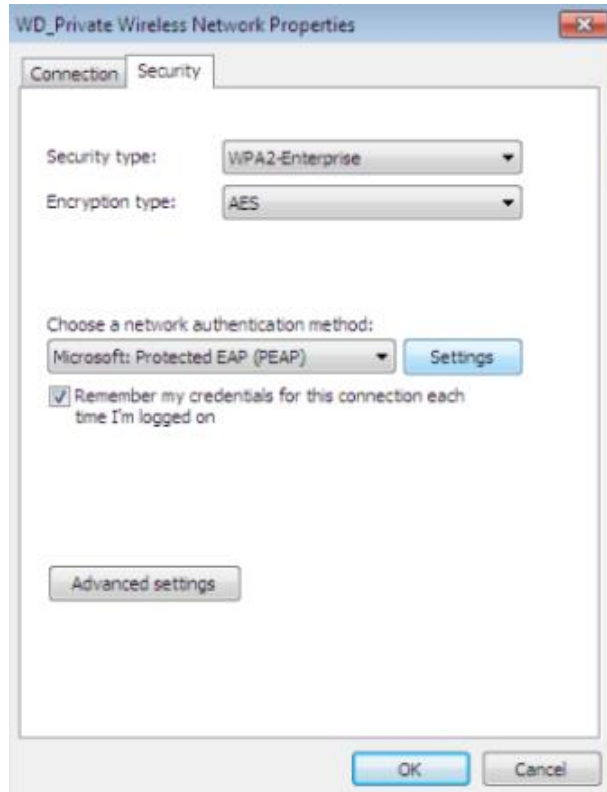
- Network name: Text box containing "WD\_Private"
- Security type: Dropdown menu set to "WPA2-Enterprise"
- Encryption type: Dropdown menu set to "AES"
- Security Key: Text box (empty) with a "Hide characters" checkbox to its right.
- Start this connection automatically: Checked checkbox.
- Connect even if the network is not broadcasting: Unchecked checkbox.
- Warning: "Warning: If you select this option, your computer's privacy might be at risk."
- Buttons: "Next" and "Cancel" at the bottom right.

Click Change Connection Settings  
Successfully added WD\_Private

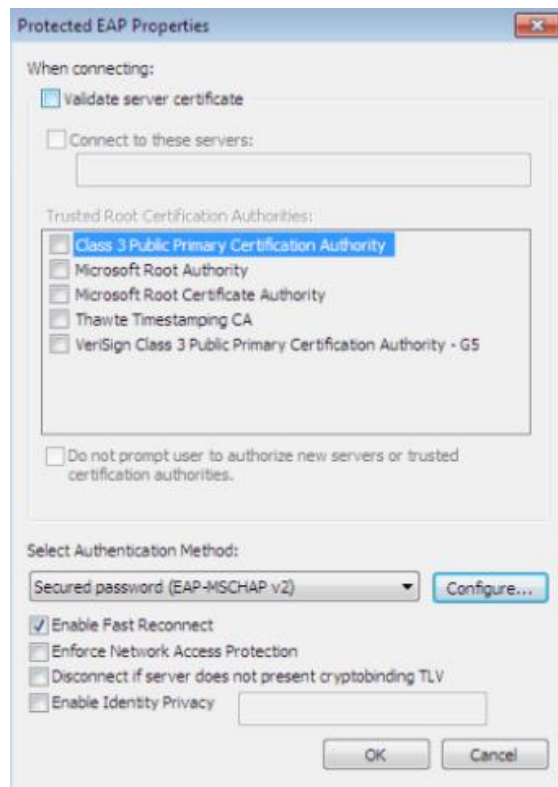


**Change connection settings**  
Open the connection properties so that I can change the settings.

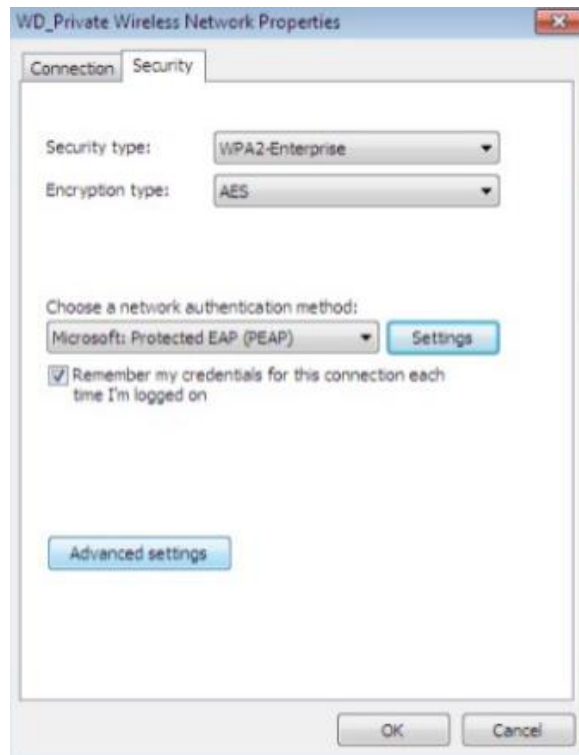
Click on the Security tab, and then click the Settings button



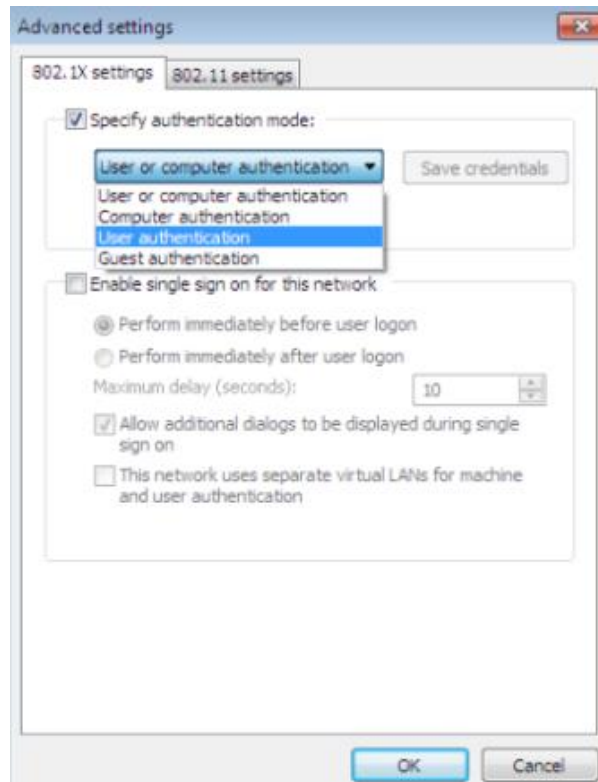
Uncheck the Validate server certificate check box, and then click OK



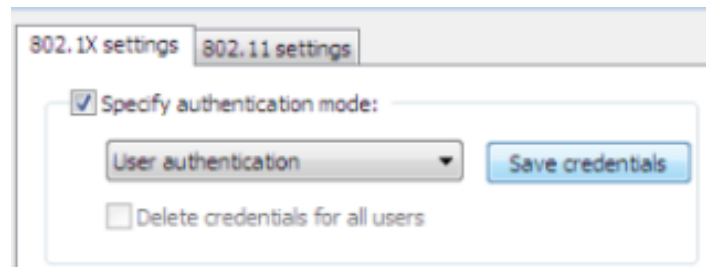
Click on the Advanced settings button



Make sure the Specify authentication mode check box is checked  
Choose the user authentication.



Click on Save credentials



Enter in your district username and password

Then click OK



Click OK to the remaining windows that are open

You should now be connected to the WD\_Private wireless



If you get the below message, browse to <http://www.wdbgschools.org/Windows10.aspx> on your device, and follow the onscreen instructions to install the internet certificate

